

Lentement Aus der Tafelmusk Telemann Cello

Musical score for Cello, 'Aus der Tafelmusk' by Telemann, marked 'Lentement'. The score is written in bass clef with a key signature of two flats (B-flat and E-flat) and a common time signature (C). The piece is divided into measures, with measure numbers 6, 11, 16, 20, 25, 33, 40, 48, 54, 60, and 66 indicated at the start of their respective lines. The tempo is marked 'Lentement' at the beginning. At measure 25, the tempo changes to 'Presto' and the time signature changes to 3/4, indicated by a double bar line and the word 'Presto' followed by a 3/4 time signature symbol. The score includes various musical notations such as rests, notes, slurs, and dynamic markings.

74



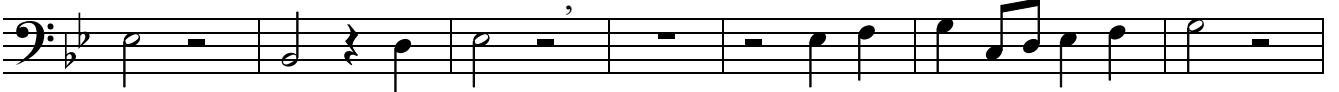
81



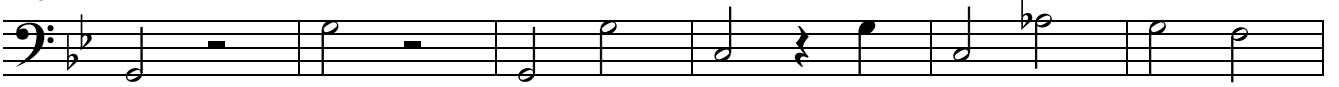
89



95



102



108



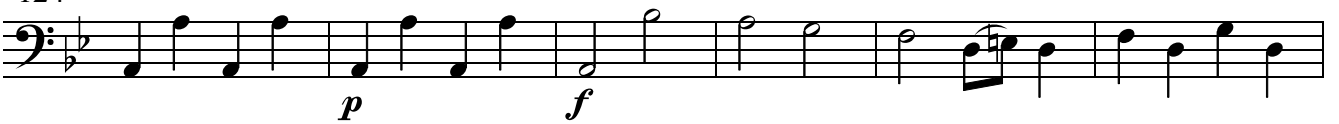
114



120



124



130



136



143



151

Measures 151-154: Bass clef, key signature of two flats, 4/4 time. The melody consists of quarter and eighth notes.

155

Measures 155-161: Bass clef, key signature of two flats, 4/4 time. The melody continues with quarter and eighth notes.

162

Measures 162-168: Bass clef, key signature of two flats, 4/4 time. The melody continues with quarter and eighth notes.

169

Lentement

Measures 169-175: Bass clef, key signature of two flats, 4/4 time. Measure 169 starts with a *p* dynamic, followed by a *f* dynamic. The piece concludes with a double bar line and a repeat sign.

176

Measures 176-179: Bass clef, key signature of two flats, 4/4 time. The melody features sixteenth-note runs.

180

Measures 180-183: Bass clef, key signature of two flats, 4/4 time. The melody continues with sixteenth-note runs.

184

1. Presto da capo

Measures 184-187: Bass clef, key signature of two flats, 4/4 time. Measure 184 features a sixteenth-note run. The piece ends with a first ending bracket and a double bar line.

Bergerie

Measures 1-5: Bass clef, key signature of two flats, 6/8 time. The melody consists of quarter and eighth notes.

6

Measures 6-11: Bass clef, key signature of two flats, 6/8 time. The melody continues with quarter and eighth notes.

12

Measures 12-17: Bass clef, key signature of two flats, 6/8 time. The melody continues with quarter and eighth notes. The piece ends with a fermata and the word "fine".

18

Measures 18-22: Bass clef, key signature of two flats, 6/8 time. The melody continues with quarter and eighth notes.

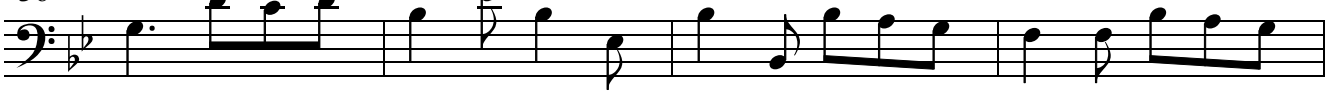
23

Measures 23-27: Bass clef, key signature of two flats, 6/8 time. The melody continues with quarter and eighth notes.

30



36



40



46



52



57



63



69



da capo



7



15



22



27

fine

33

38

44

49

54

60

da capo

Postillons

6

11

17

22

27

33

39

45

50

56

61

66

71

Flatric

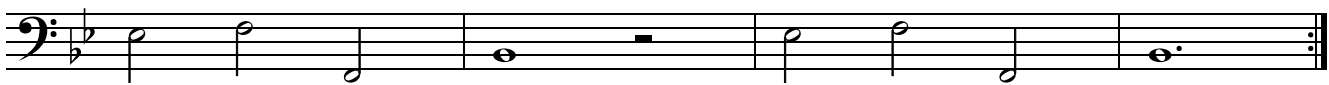
8

15

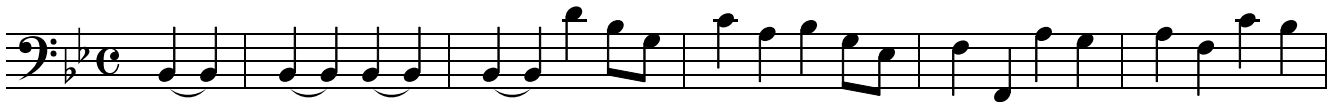
22



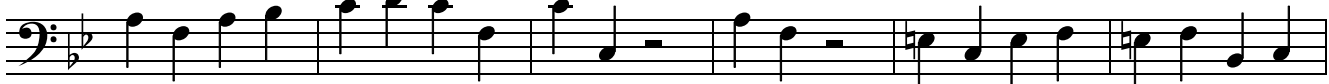
29



Badinage



6



12



18



23



27



33



38



42



46



Menuett

10

19

30

38

46

1.

2.